

NATIONAL ARCHIVES OF AUSTRALIA



These pages are copied from:

Series E460

Item 1982/235 Part 1

Title Raknurara Bootong Association
Frances Bay (Railway Dam)

These copies are provided for research or study purposes. Before making use of the material for other purposes (for example publication) you should familiarise yourself with any copyright obligations. See the Fact Sheets available from the National Archives website. These include:

Fact Sheet 8 – Copyright

Fact Sheet 7 – Citing archival records

National Reference Service

PO Box 7425

Canberra BC ACT 2610

Tel: 1300 886 881

Fax: 1300 886 882

Email: ref@naa.gov.au



Australian Government



NATIONAL
ARCHIVES
OF AUSTRALIA

naa.gov.au

FILE No. 75/702
ACTION OFFICER BERRY



DESCRIPTION OF DEVELOPMENT AND SUGGESTED USE OF RAILWAY DAM CAMP.

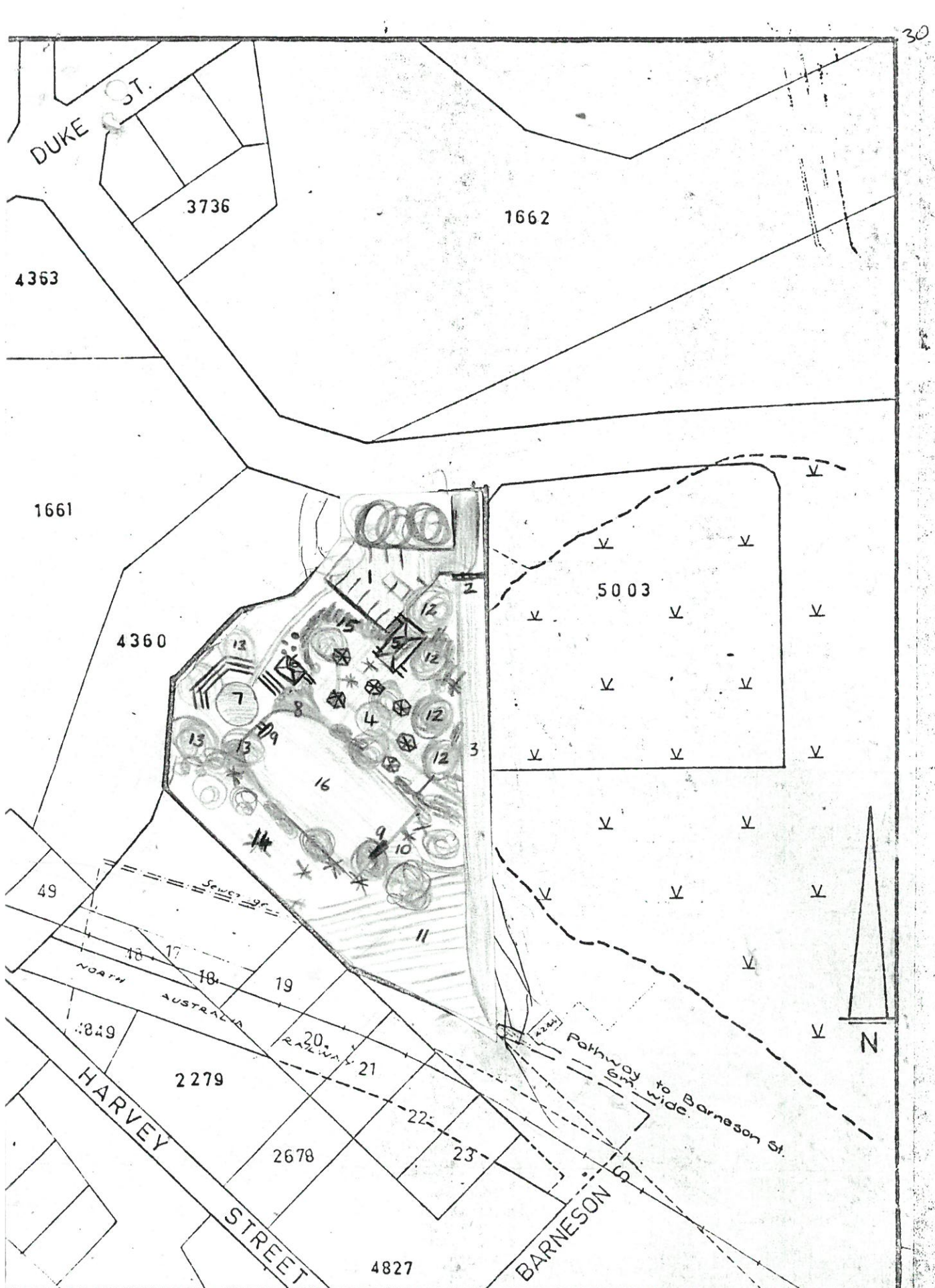
KEY:

1. Parking area - access from Dinah Beach Road. Drainage to same road.
2. Boom gate controlling use of track to service vehicles only.
3. Track to sewerage outlet, railway, oil pipes etc. This track to replace the present track that cuts the lot in half. (Aligned with boundary of lot.
4. Central clearing surrounded by six or so dwellings of pleasing design compatible with Aboriginal life style.
5. Ablution block- single male and female WC at one end with access from car park. Camp facilities at other end - wash tubs, WCs, showers etc.
6. Kiosk and camp storeroom. Open during performances for cigs, drinks, postcards, artefacts.
7. Public corroboree ground surrounded by tiered seating.
8. Sandy slopes to water.
9. Landings.
10. water views. Shaded picnic spot favoured by Aborigines.
11. A ^{new} _{area} needing substantial filling. Possible camp for transient aborigines.
12. Mango trees.
13. Large shade trees eg raintrees.
14. Public parkland controlled by aborigines.
15. Thick foliage screen giving camp privacy from parking area and path to performance ground.
16. Dam water surrounded by paperbark trees and pandanus palms. Hopefully used by water birds & encouraged by feeding).

HOW ABORIGINES WILL MAKE AN INCOME FROM TOURISTS WITH MINIMUM DISRUPTION TO PRIVACY.

Kiosk opens 9.30 am Dances advertised as daily at 10 am.
 Tourists not permitted in camp area.
 Aboriginal gives introduction.
 Dancers approach in two dugout canoes from landing at opposite end of dam.
 Dancing begins on corroboree ground.
 Demonstration of firelighting.
 Demonstration of turtle spearing from dugout.
 Mock battle by two groups - spear throwing across water.
 When there is a demand, performance can be repeated at night to great effect.
 Dancers wages may have to be subsidised.
 NB Most of the people using the Railway Dam camp have experience from Mica Beach and Mandorah and enjoy this.
 All tourist operators agree there is a need for corroborees in city area.

W. R. Day RAKNURARA BOOTONG
 per ASSOCIATION INC



NORTHERN TERRITORY TOWN PLANNING BOARD

RAILWAY DAM CAMPSITE

AMENDMENT NO. 75.

SCALE : 200' = 1"

AUGUST 1972

DRAWN : PM

TP211/75

TPB 31.7.12